



DIVERSE SUBCONTRACTOR AND SUPPLIER OUTREACH EVENT

NOVEMBER 4, 2024 • 1:00 PM (EST)

MARYLAND TRANSPORTATION AUTHORITY'S

KEY BRIDGE REBUILD

I-695/MD 695 OVER THE PATAPSCO RIVER/
BALTIMORE HARBOR

The presentation will begin shortly.

Please “sign in” by typing your name and company in the Q&A panel at the right side of the screen.



Kiewit

DIVERSE SUBCONTRACTOR AND SUPPLIER OUTREACH EVENT

MARYLAND TRANSPORTATION AUTHORITY'S


KEY BRIDGE REBUILD

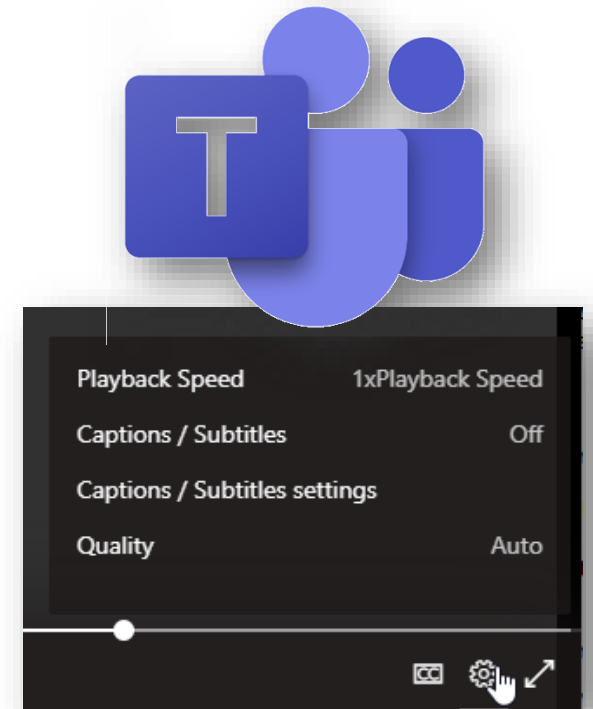
I-695/MD 695 OVER THE PATAPSCO RIVER/ BALTIMORE HARBOR

NOVEMBER 5, 2024 1:00 PM (EST)



MICROSOFT TEAMS LIVE TIPS

- All attendees are MUTED.
- To sign in, type your name and company in the Q&A panel on the right side of screen (Select the Q&A icon  in the upper right-hand corner to show Q&A).
- To turn on live captions and subtitles, select **Captions/Subtitles on** in your controls.
- To change the caption language, select **Caption/Subtitle settings**, and choose your preferred language.
- If you experience technical difficulties, please exit event and reenter.
- Attendees may experience a slight delay during slide transitions.
- A copy of the presentation will be available following the event.



This event is being recorded.

AGENDA

- Welcome Remarks
- Kiewit Company Overview
- Project Overview
- **Immediate Bid Opportunities: Early Works**
- Bid Submittal Instructions
- Working with Kiewit
- Commitment to Diversity
- Questions and Answers

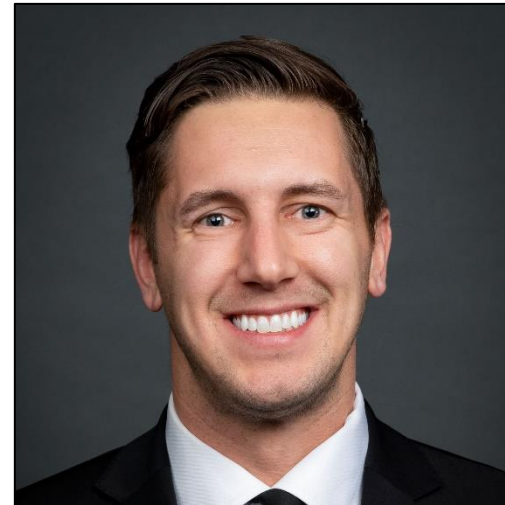
MEET OUR PRESENTERS



Kelli Kelly
Economic Inclusion Lead



Donnie Arant
Pre-Construction Manager



Dan Virgilio
Construction Manager



Jerel Worthy
Community Outreach Manager

KIEWIT COMPANY OVERVIEW

➤ \$17.1 BILLION EARNED REVENUE IN 2023

- Largest Transportation Contractor in North America

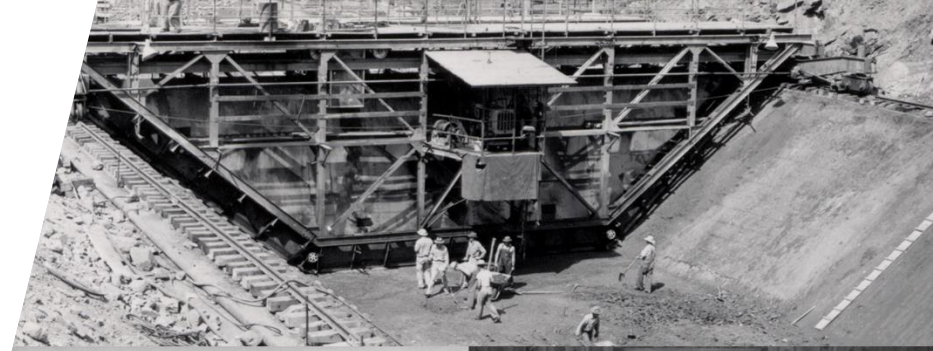
➤ FORTUNE 500 COMPANY FOR 20+ YEARS

➤ 31,100 CRAFT AND STAFF EMPLOYEES

ENR
Engineering News-Record
2024 Rankings

#1 Domestic Heavy Civil Contractor
#1 Transportation Contractor
#2 Overall Contractor

➤ **FOUNDED IN 1884, KIEWIT OFFERS SERVICES IN A VARIETY OF MARKETS.**



KIEWIT CORE VALUES



PEOPLE

WE REGARD PEOPLE AS OUR MOST VALUED RESOURCE

- Safety
- Dignity and Respect
- Inclusion
- Collaboration



INTEGRITY

WE HONOR OUR COMMITMENTS

- Fairness
- Transparency
- Accountability
- Honesty



EXCELLENCE

WE PURSUE QUALITY WITHOUT COMPROMISE

- Innovation
- Creativity
- Competition
- Continuous Improvement



STEWARDSHIP

WE INVEST WHERE WE WORK AND LIVE

- Sustainability
- Community Partnership
- Mentorship
- Responsibility

KIEWIT OFFICE LOCATIONS AND MARKETS



BUILDING



INDUSTRIAL



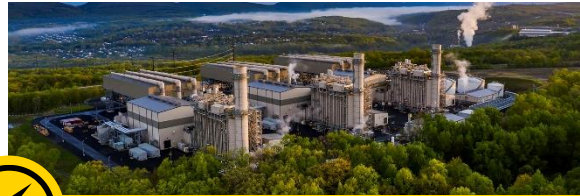
MARINE



MINING



OIL, GAS & CHEMICAL



POWER



TRANSPORTATION



WATER / WASTEWATER



KIEWIT IN BALTIMORE

Kiewit has been a Baltimore-Area Contractor for over 50 Years

- Amtrak Frederick Douglass Memorial Tunnel - Package A (Ongoing)
- Ellicott City North Tunnel, Howard County (Ongoing)
- University of Maryland NextGEN (Ongoing)
- Chesapeake Bay Bridges
- The Historic Arlington Memorial Bridge
- WMATA Yellow Line Tunnel and Bridge Repairs & Multiple other WMATA, DC & DMV Area Projects
- BWI Airport Pier A Extension
- Baltimore Phoenix Shot Tower Tunnel
- Fort McHenry Tunnel





KEY BRIDGE REBUILD PROJECT OVERVIEW

**DIVERSE SUBCONTRACTOR/
SUPPLIER OUTREACH**

PROJECT DESCRIPTION

The purpose of Maryland Transportation Authority's (MDTA) Key Bridge Rebuild (I-695/MD 695 over the Patapsco River/Baltimore Harbor) Design-Build Project is to reconstruct the Francis Scott Key Bridge that collapsed after a vessel strike on March 26, 2024.

The Project will be delivered via the Progressive Design-Build delivery method with anticipated scope to include the construction of a new bridge, along with work necessary to tie the new bridge into the existing infrastructure.

- The Project is advancing in two phases: Phase 1 – Project Development services and Phase 2 – Project Delivery services.
- The comprehensive Phase 1 scope is currently being developed by Kiewit, MDTA, and Subconsultants.
- Construction is targeted for completion by Late 2028.

PROJECT DETAILS: KEY BRIDGE REBUILD

Project Details	
Project Owner	Maryland Transportation Authority
Est. Project Value	\$1.7 – 1.9 Billion
Delivery Model	Progressive Design Build
Lead Designer	Kiewit Engineering Group, Inc.
Lead Contractor	Kiewit Infrastructure Co.

UNDERSTANDING PROGRESSIVE DESIGN BUILD DELIVERY PHASES

One contract with 2 phases:

- 1) Phase 1: Project Development (Pre-construction and design - anywhere from 0% - 50%)
- 2) Phase 2: Project Delivery (Construction, GMP anticipated at 50% design)

Phase 1 – Project Development

Phase 1 Work typically includes completing the Final Design Documents and providing recommendations regarding constructability, risk allocation, cost, and schedule, and preparation and submittal to the Agency of a Phase 2 Proposal for the Phase 2 Work.

Other Phase 1 areas of focus may include:

- Recommendations for Early Works Packages
- Subcontracting plan development
- Coordination with Third Parties
- Interface coordination; community outreach

Phase 2 – Project Delivery

Phase 2 Work typically includes the provision of recommendations to the Agency on the planning, design, and proposed construction of the Project as they apply to the Final Design Documents

Other Phase 2 areas of focus may include:

- Site preparation work
- Procurement of materials and equipment
- Interface coordination
- Continued coordination with Third Parties, implementation of subcontracting plan; community outreach Construction of all elements of the Project
- Warranty services

FRANCIS KEY BRIDGE DETAILS

- The Francis Scott Key Bridge (FSK) was a 1.7-mile-long bridge on I-695/MD 695 spanning the navigable Patapsco River providing a critical connection to the Port of Baltimore.
- I-695/MD 695 is a fully access controlled highway, forming the southeastern section of the beltway loop around Baltimore City.
- FSK was a divided four-lane typical section with two lanes in each direction and was on the National Highway System (NHS).
- Pier 17 was one of the four supports of the continuous through truss spans of the FSK bridge



SUMMARY OF MDTA'S PROJECT GOALS



Collaboration



Achieve a collaborative and integrated partnership between all project team members with local communities and stakeholders

Schedule



Goal of opening all lanes to vehicular traffic no later than October 15, 2028

Safety



Provide a safe and secure project throughout Phase 1 and Phase 2, with zero fatalities or serious injuries to workers

Quality



Deliver a resilient and aesthetically pleasing bridge exceeding the 75-year service life requirements

Cost



Transparency in cost estimating and negotiation and delivery at or below the negotiated budgets

Aesthetics



Visually attractive structure that minimizes the number of piers in the Patapsco River

DBE PARTICIPATION GOALS

Kiewit is committed to meeting or exceeding the 26% Disadvantaged Business Enterprise (DBE) goal established for this project.

For participation to count toward the goal, firms must be certified by MDOT as a Maryland DBE.



For more information regarding MDOT DBE certifications, visit: [MBE/DBE/ACDBE/SBE Certification - MDOT \(maryland.gov\)](https://www.maryland.gov/mbesdbesbe/certification)



Contact MDOT's Office of Minority Business Enterprise (OMBE) with questions at: (410) 865-1269 or mbe@mdot.maryland.gov



IMMEDIATE BID OPPORTUNITIES

EARLY WORKS RFPS

**DIVERSE SUBCONTRACTOR/
SUPPLIER OUTREACH**

EARLY WORKS BID OPPORTUNITIES



BRIDGE DEMOLITION

Early Works RFP	Scope Packages	NAICS Codes	RFP Release Date	Contract Type
EWP-01: Bridge Demolition	Land Demo - TURNKEY Demolition package <i>(Seeking award to a single firm/team providing ALL of the following scopes via self-perform or subcontract):</i> <ul style="list-style-type: none">• Sawcutting• Trucking• Disposal• HAZMAT Survey• ACM Abatement	238990 562119 562119 562211 562211	11/4/2024	Prime Subcontract with lower tier subcontract opportunities

Scope details and contact information will be provided in BuildingConnected upon RFP release.

EARLY WORKS BID OPPORTUNITIES

BRIDGE DEMOLITION



Early Works RFP	Scope Packages	NAICS Codes	Anticipated RFP Release Date	Contract Type
EWP-01: Bridge Demolition	Marine Demo: <ul style="list-style-type: none">• Sawcutting• Blasters• Trucking• Disposal• Divers• HAZMAT Survey• ACM Abatement• Boat Support	238990 238910 562119 562119 237990 562211 562211 488330	11/6/2024	Subcontract

Scope details and contact information will be provided in BuildingConnected upon RFP release.

EARLY WORKS BID OPPORTUNITIES

BRIDGE DEMOLITION



Early Works RFP	Scope Packages	NAICS Codes	Anticipated RFP Release Date	Contract Type
EWP-01: Bridge Demolition	Demolition Material Disposal <ul style="list-style-type: none">• Concrete Disposal• Steel Recycling	562119 562119	11/6/2024	Subcontract

Scope details and contact information will be provided in BuildingConnected upon RFP release.

EARLY WORKS BID OPPORTUNITIES

TEST PILE PROCUREMENT



Early Works RFP	Scope Packages	NAICS Codes	Anticipated RFP Release Date	Contract Type
WO-09: Test Pile Procurement	<ul style="list-style-type: none">• Pile Material• Load Test Frame Furnish and Fabricate	331110, 237990 331221	11/6/24	Supplier

Scope details and contact information will be provided in BuildingConnected upon RFP release.

EARLY WORKS BID OPPORTUNITIES

TEST PILE INSTALLATION



Early Works RFP	Scope Packages	NAICS Codes	Anticipated RFP Release Date	Contract Type
WO-10: Test Pile Installation	<ul style="list-style-type: none">• Welders• Marine Support• Load Test Monitoring Geotechnical Consultant	238190 488330 541380	11/6/24	Subcontract

Scope details and contact information will be provided in BuildingConnected upon RFP release.

EARLY WORKS BID OPPORTUNITIES



TRESTLE INSTALLATION

Early Works RFP	Scope Packages	NAICS Codes	Anticipated RFP Release Date	Contract Type
EWP-02: Trestle Installation	<ul style="list-style-type: none">• Trestle Pile• Trestle Steel Fabrication• Crane Mat Supply and Installation	331110, 237990 331221, 331110	11/21/2024	Supplier

Scope details and contact information will be provided in BuildingConnected upon RFP release.

EARLY WORKS BID OPPORTUNITIES



TRESTLE INSTALLATION

Early Works RFP	Scope Packages	NAICS Codes	Anticipated RFP Release Date	Contract Type
EWP-02: Trestle Installation	<ul style="list-style-type: none">• Welders• Boat Support• Trucking• Staging area	238190 488330 562119	11/21/2024	Subcontract

Scope details and contact information will be provided in BuildingConnected upon RFP release.



ACCESSING BID OPPORTUNITIES

**DIVERSE SUBCONTRACTOR/
SUPPLIER OUTREACH**

SOLICITATION COMMUNICATIONS

- Notification via B2gNow to targeted NAICS codes in certified database
- Bid invitations and communications issued via BuildingConnected
- Direct email to project mailing list & scope specific bidders list
- Notification to community organizations
- Announcement on website



KEY DATES/EVENTS FOR BIDDERS:



- ❑ **RFPs Posted (11/4/24):** Bid packages will be available as early as 11/4/24 on BuildingConnected.
- ❑ **Virtual Outreach Event (11/4/24):** Event on Tuesday, November 4, 2024 at 1:00pm EST to provide an overview of the project, immediate early works contract opportunities, and bid submittal instructions. ***A recording of the event will be available.***
- ❑ **Land Demo Bidder Site Walk (11/6/24):** A site walk will be conducted on November 6, 2024 at 1pm EST.

Only bidders intending to submit turnkey bids (inclusive of ALL listed scopes) for the Land Demolition RFP should attend. Register here.

- ❑ **LAND DEMOLITION BIDS DUE TO KIEWIT NOVEMBER 15, 2024 BY 5PM EST**

ACCESSING BID OPPORTUNITIES

Kiewit utilizes BuildingConnected for bidder communications regarding plans/specs/addenda distribution.

To access scope specific bid documents and project information:

STEP 1:

Complete our **Subcontractor Questionnaire** to provide your capabilities and bidding interests.

STEP 2:

Create an account with Building Connected at:
<https://app.buildingconnected.com/create-account>

Need help with BuildingConnected?

Visit: <https://support.buildingconnected.com/hc/en-us>

STEP 3:

Email **RebuildKeyBridge@Kiewit.com** to request an invitation to the scope package(s) you are interested in bidding.

Once Kiewit has received your emailed request, you will receive an invitation to bid via BuildingConnected as bid packages become available.



WORKING WITH KIEWIT

**DIVERSE SUBCONTRACTOR/
SUPPLIER OUTREACH**

WHAT DOES IT TAKE TO WORK WITH US?



We evaluate companies on different criteria based on specific project requirements. This may include, but is not limited to:

- Safety performance
- Proven quality
- Certification
- Insurance and bonding capability
- On-time performance
- Years in business
- Reputation
- Past performance with Kiewit or Client
- Value-added products or services

SAFETY REQUIREMENTS

We take seriously our responsibility to keep each other and the public safe on our jobs. Our commitment to safety is demonstrated by:

- Craft and staff collaboration to lead safety efforts on our projects.
- Site-specific orientations and trainings to prepare all team members for the work.
- Hazard analysis requirement before any operation can begin and safety meeting with foremen and crews at start of each shift.
- Project safety inspection tours and assessments to identify areas for improvement and best practices.



DIVERSITY AND NONDISCRIMINATION

Rooted by our corporate core values, Kiewit is committed to inclusive employment and business practices that reflect equity, respect, and accountability.

- Respectful behavior extends to everyone in the company, as well as prospective employees, subcontractors, vendors and clients.
- We believe in an inclusive environment and community.



➤ **KIEWIT HAS ZERO TOLERANCE FOR DISCRIMINATION OR HARASSMENT.**

GET READY FOR Q&A!

Please type your questions in the Q&A panel on the right.

Our moderator will direct to the appropriate presenter.





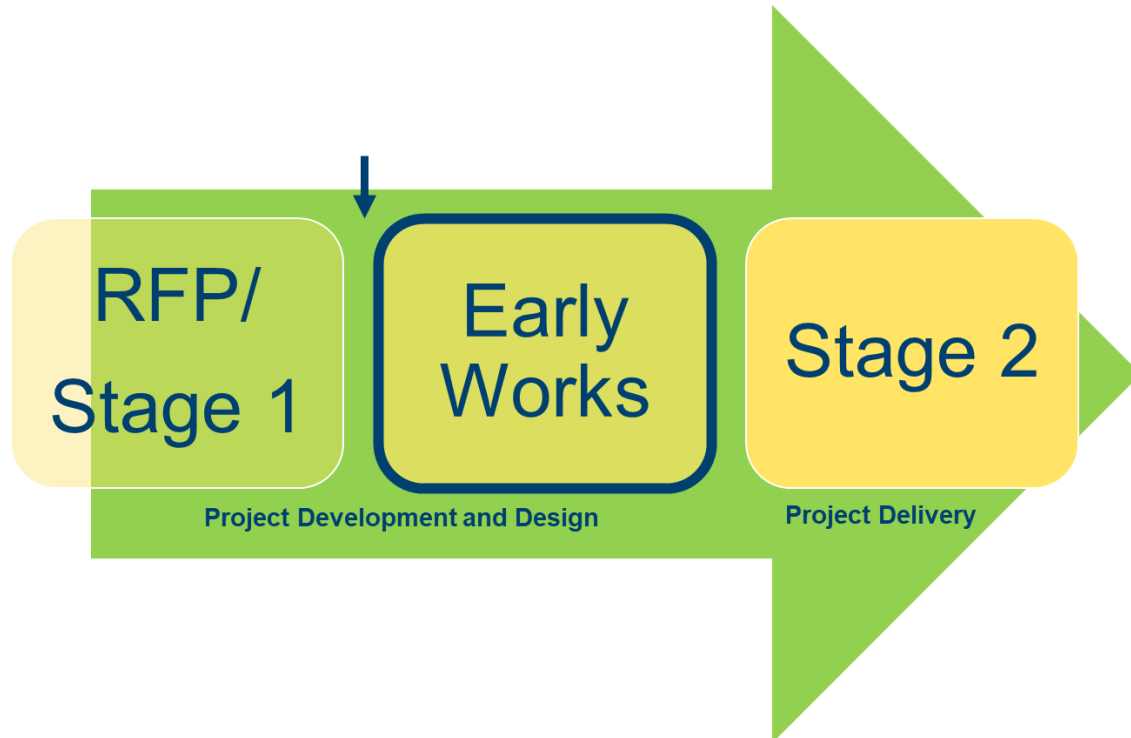
FUTURE OPPORTUNITIES

**DIVERSE SUBCONTRACTOR/
SUPPLIER OUTREACH**

STAY TUNED FOR FUTURE BID OPPORTUNITIES

During this early stage of the project, Kiewit is seeking to engage local, small, and diverse firms whose services align with Early Works scope.

We are also working to identify firms interested in exploring future participation opportunities for the duration of the project.



ADDITIONAL OPPORTUNITIES WILL BE COMMUNICATED AS THE PROJECT PROGRESSES.

Information on future events will be shared via email, B2G, and our project website. Join our project database to ensure you are notified about opportunities to connect!

FUTURE OPPORTUNITIES

Anticipated scopes include (but are not limited to):

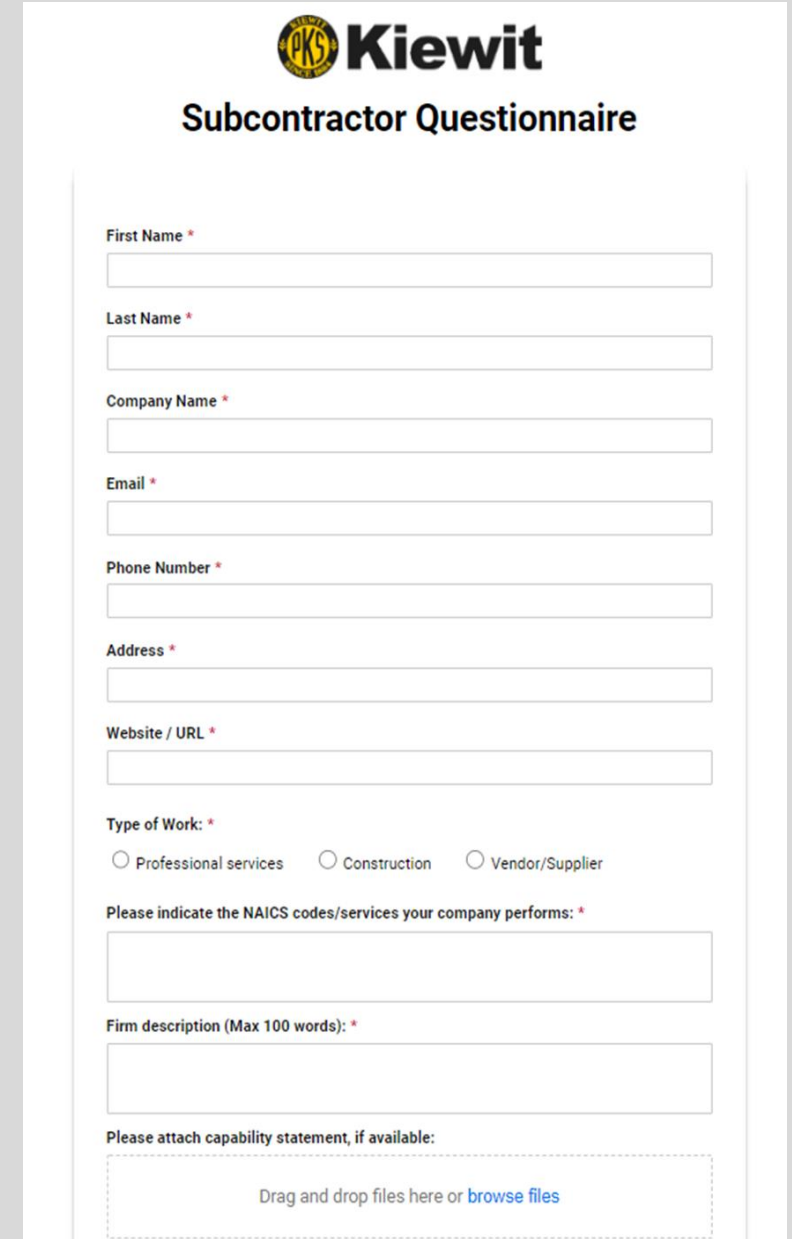
- Administration Support/Document Control
- Asphalt Milling, Supply and Paving
- Barrier Wall
- Bridge Drainage
- Deck Overlays
- Demolition/Disposal of Materials
- Design
- Fencing
- Flatwork
- Grinding/Grooving
- Guardrail
- Lighting
- Maintenance of Traffic
- Marine Support
- Material Supply (Steel, Concrete Girders, Aggregates, Borrow, Specialty Materials)
- Misc. Concrete Work (Retaining Walls)
- Painting
- Reinforcing Steel Supply and Install
- Roadway Civil and Drainage
- Signage
- Steel Erection
- Striping
- Tow Truck/Emergency Response
- Trucking

NEXT STEPS: JOIN OUR DATABASE

STEP 1:

Complete our **Subcontractor Questionnaire** to join our mailing list and help us understand your capabilities and bidding interests.

After completing our Subcontractor Questionnaire, you will be added to our database.



The image shows a screenshot of the Kiewit Subcontractor Questionnaire form. At the top, the Kiewit logo is displayed, consisting of a circular emblem with 'PKS' inside and the word 'Kiewit' to its right. Below the logo, the title 'Subcontractor Questionnaire' is centered. The form itself is a vertical list of input fields and a radio button group. The fields are labeled: 'First Name *', 'Last Name *', 'Company Name *', 'Email *', 'Phone Number *', 'Address *', and 'Website / URL *'. Each label is followed by a text input box. Below these fields is a section for 'Type of Work: *' with three radio button options: 'Professional services', 'Construction', and 'Vendor/Supplier'. This is followed by a text field for 'Please indicate the NAICS codes/services your company performs: *'. Next is a text field for 'Firm description (Max 100 words): *'. At the bottom, there is a dashed box labeled 'Please attach capability statement, if available:' containing the text 'Drag and drop files here or [browse files](#)'.

Kiewit
Subcontractor Questionnaire

First Name *

Last Name *

Company Name *

Email *

Phone Number *

Address *

Website / URL *

Type of Work: *

☐ Professional services ☐ Construction ☐ Vendor/Supplier

Please indicate the NAICS codes/services your company performs: *

Firm description (Max 100 words): *

Please attach capability statement, if available:

Drag and drop files here or [browse files](#)



NEXT STEPS: JOIN OUR BIDDERS LIST

STEP 1:

Sign-up for **BuildingConnected** to be added to our bidder's list!

- Create an account with Building Connected
<https://app.buildingconnected.com/create-account>
- Follow this link to see public Kiewit projects:
<https://app.buildingconnected.com/public/545c695dc26ca11600879dd8>



RESOURCES AND ASSISTANCE

**DIVERSE SUBCONTRACTOR/
SUPPLIER OUTREACH**

RESOURCES AND ASSISTANCE



KEY BRIDGE REBUILD PROJECT MARYLAND TRANSPORTATION AUTHORITY

Kiewit is providing Progressive Design-Build Services for the delivery of the Maryland Transportation Authority's (MDTA) Key Bridge Rebuild Project.

We are actively seeking to engage local, small, and diverse firms interested in professional services, construction, and supplier opportunities on the Project.

KIEWIT BELIEVES IN INVESTING IN THE COMMUNITIES WHERE WE WORK AND LIVE.

As a company, we are committed to leveraging our projects to advance equity through increased connectivity, mobility, and opportunity.

Key Bridge Rebuild Project

VIRTUAL TECHNICAL ASSISTANCE HUB RESOURCES TO HELP YOU GET "BID-READY!"

Click on topics below to access resources and training!

ACCOUNTING

- Article: [Construction Accounting 101 \(Foundation Software\)](#)
- Template: [Balance Sheet Sample \(LouisianaSBD\)](#)
- Template: [Income Statement Sample \(LouisianaSBD\)](#)
- Webinar: [7 Best Tax Write-Offs for Small Business & Self Employed to Cut Your Taxes \(FedAccess\)](#)
- Webinar: [Small Business Tax Workshop Series \(IRS\)](#)

ALTERNATIVE DELIVERY

- Article: [The Emergence of Progressive Design Build \(DBIA\)](#)
- PDF: [Primer Progressive Design Build \(DBIA\)](#)

BACK TO BASICS

- PDF: [Business Plan Template \(SCORE\)](#)
- PDF: [Guidelines for Business Plan Submissions \(ST. Bernard\)](#)
- Webinar: [Developing Your Marketing Plan \(SCORE\)](#)
- Webinar: [Registering New Entities for Government Contracts \(SAM\)](#)
- Website: [NAICS & SIC Identification Tools \(USMCA\)](#)
- Website: [North American Industry Classification System NAICS \(Census\)](#)
- Webinar: [10 steps to start your business - Small Businesses Administration \(SBA\)](#)

BONDING

- Article: [Surety Bonds for Small Business \(Forbes\)](#)
- PDF: [AGC Surety Claims Guide \(AGC\)](#)
- PDF: [How to Obtain Surety Bonds \(SIO\)](#)
- PDF: [The Importance of Surety Bonds in Construction \(SIO\)](#)
- Webinar: [SBA Surety Bonds for Small](#)

- Website: [Surety bonds \(SBA\)](#)

BUSINESS DEVELOPMENT

- Article: [How to Write a Capability Statement: Guide & Sample for Contractors \(Foundation Software\)](#)
- Webinar: [Find Government Contracts to Bid On \(SAM\)](#)
- Webinar: [Find Your Target Customers \(FedAccess\)](#)
- Webinar: [How to Write a Proposal to the Government Step-by-Step \(FedAccess\)](#)
- Webinar: [How to Write a Winning Capability Statement \(FedAccess\)](#)
- Webinar: [System for Award Management Tips for Registering \(SAM\)](#)
- Webinar: [The 4 Stages of Winning \(and Getting Paid for\) a Government Contract \(FedAccess\)](#)
- Webinar: [Your 1st Government Contract \(FedAccess\)](#)

CERTIFICATION

- PDF: [DBE Application Tripwires \(USDOT\)](#)
- Webinar: [Federal Government Certifications for Small Business Owners \(FedAccess\)](#)
- Website: [Business Certifications \(LouisianaSBD\)](#)

CONTRACTS

- Article: [Contract Review Reminders \(CE\)](#)
- Webinar: [Contract Types Simplified: Fixed-Price, Time-and-Materials, and Cost-Plus \(FedAccess\)](#)
- Webinar: [How to Read a Federal Acquisition Regulation Matter? \(FedAccess\)](#)
- Webinar: [Which Parts of the Federal Acquisition Regulation Matter? \(FedAccess\)](#)

EMERGING TECHNOLOGY

- Article: [The Future and Limitations of](#)

- Article: [Use Technology to Create an Inclusive and Effective Culture \(CE\)](#)
- Website: [Best Practices for IT & Cybersecurity \(LouisianaSBD\)](#)

ESTIMATING

- Webinar: [Price to Win and Price to Profit \(FedAccess\)](#)
- Webinar: [Construction Cost Estimating \(ConstructIQ\)](#)

HR BEST PRACTICES

- Article: [Best Small Business Health Insurance Providers & Plans \(eHealth\)](#)
- Article: [Diversity in Construction Seven Tips for Successful DEI Programs \(CE\)](#)
- Article: [Do Small Businesses Need Workers Compensation Insurance? \(eHealth\)](#)
- Article: [Employee Benefits \(AIA\)](#)
- Article: [The Complete Guide To Human Resources For Small Business \(When I Work\)](#)
- Article: [What is the Average Cost of Small Business Health Insurance? \(eHealth\)](#)
- Webinar: [Employee Recruitment and Retention Overview \(SBA\)](#)
- Webinar: [HR Best Practices and Laws to Consider \(ROUTE\)](#)

INSURANCE

- Webinar: [Contractor's Insurance Programs \(Norcal PTAC\)](#)

OCIP

- Article: [Construction Wrap Up Insurance Programs \(CE\)](#)
- Article: [OCIP And CCIP Insurance Overview \(CE\)](#)

PREVAILING WAGE

- PDF: [Prevailing Wage Seminar \(DOL\)](#)
- Webinar: [Completing a Certified Payroll Report \(Power Summit\)](#)

- Webinar: [Federal Prevailing Wage \(DBE Advantage\)](#)
- Webinar: [Prevailing Wage Requirements for Construction Contracts \(Caltrans\)](#)

PROJECT LABOR AGREEMENTS

- PDF: [What is a Project Labor Agreement? \(Construction Academy\)](#)
- Webinar: [Minimum Wage Requirements \(USDOL\)](#)

QUALITY

- PDF: [Design Development Quality Management Phase Checklist \(AIA\)](#)

RISK MANAGEMENT

- Article: [Manage the Top Three Risks Contractors Face Today \(CE\)](#)
- Article: [Risk Management \(AIA\)](#)
- Webinar: [Managing Risk in High-Hazard Sectors \(WorkSafeBC\)](#)

SAFETY

- Article: [Safety Plan Template \(OSHA\)](#)
- Article: [Toolbox Talks Safety Meetings \(OSHA\)](#)
- PDF: [Roadway Safety Awareness Program \(USDOT\)](#)
- PDF: [Safety Training Requirements \(OSHA\)](#)
- PDF: [Small Business Safety and Health Handbook \(OSHA\)](#)
- Webinar: [Construction Safety \(OSHA\)](#)
- Webinar: [Safety in Construction Fall Hazards \(Alison\)](#)
- Webinar: [The Intersection of Culture, Safety and Total Human Health \(ABC TURNER\)](#)

TEAMING

- Webinar: [How to Set Up Your Profile \(FedAccess\)](#)
- Why Diversity is the Key to Modern Business Success (WBENC)



FRANCIS SCOTT KEY (FSK) BRIDGE REPLACEMENT MARYLAND TRANSPORTATION AUTHORITY

ORGANIZATIONS AND RESOURCES FOR SMALL, LOCAL AND DISADVANTAGED BUSINESS ENTERPRISES

ARE YOU BID READY?

VISIT OUR VIRTUAL TECHNICAL ASSISTANCE HUB

- National Association of Minority Contractors (NAMC) DC Metro
- National Association of Minority Contractors (NAMC) DMV
- National Association of Women Business Owners Greater DC (NAWBO)
- Northern Virginia Hispanic Chamber (NOVA)
- Prince George's County Economic Development Corporation
- Prince George's County Minority Business Development Division
- Prince George's County Chamber of Commerce
- SCORE Washington DC
- Small Business Transportation Resource Center (SBTRC) Mid-Atlantic Region
- Small Business Transportation Resource Center (SBTRC) South Atlantic (DC Metro)
- The Maryland Procurement Technical Assistance Center (MD PTAC)
- Virginia Hispanic Chamber
- Women in Transportation Seminar (WTS) DC

Meeting the business inclusion goals established for local small and diverse firms through packages to ensure equitable and meaningful distribution of opportunities through various outreach and community assist agencies to provide assistance to employer.



QUESTIONS AND ANSWERS

**DIVERSE SUBCONTRACTOR/
SUPPLIER OUTREACH**

WE'RE BUILDING MORE THAN INFRASTRUCTURE

Kiewit maximizes opportunities for local DBE firms through:

- Dividing work into economically feasible packages for equitable and meaningful participation
- Actively seeking out diverse businesses that bring value to our projects
- Building upon subcontractor relationships to foster long-term partnerships
- Fostering development and growth of existing and potential diverse business partners
- Partnering with community and industry organizations focused on supporting small and diverse businesses

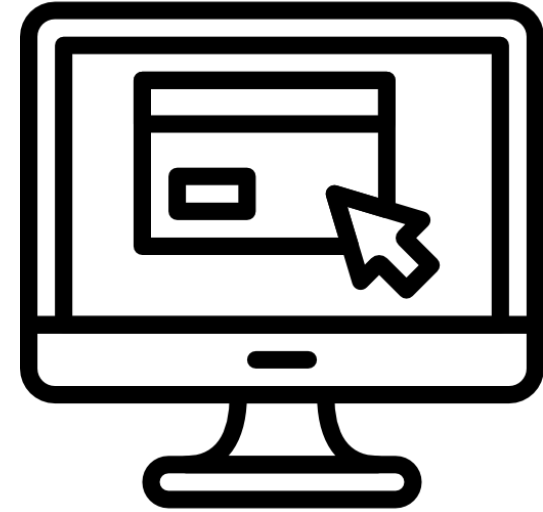


EQUITY • INCLUSION • OPPORTUNITY • GROWTH

GET CONNECTED. STAY CONNECTED.



RebuildKeyBridge@Kiewit.com



Visit our Subcontractor Portal at:
[Lead.me/Kiewit-KeyBridgeRebuild](https://lead.me/Kiewit-KeyBridgeRebuild)

**For general information about the project, visit:
<https://keybridgerebuild.com/>**



THANK YOU FOR JOINING US!

**DIVERSE SUBCONTRACTOR/
SUPPLIER OUTREACH**