

LEGACY DIVERSITY SCHOLARSHIP



The Kiewit Legacy Diversity Scholarship provides financial assistance to highly motivated, racially and ethnically underrepresented students who are the dependents of current Kiewit staff or craft employees. Graduating high school seniors and current college students who are looking to make a difference in the engineering and construction industry and, ultimately, their own lives through a rewarding career at Kiewit are invited to apply.

CRITERIA

To qualify for this scholarship, **students must meet all of the following requirements:**

1. Be a dependent of a current Kiewit staff or craft employee who has worked for the company in a full-time role for three years or more,
2. Be accepted into a construction management or engineering program,
3. Identify as an ethnic or racial minority, and
4. Meet at least one of the following minimum academic requirements:
 1. ACT score of 21 or higher or SAT score of 990 or higher
 2. Cumulative GPA of 3.00/4.00
 3. High school rank in upper 25% of graduating class
 4. Selection by the National Merit Corporation or Canada Millennium Scholarship Foundation in any category

HOW TO APPLY

Students must complete the following:

1. Fill out application form at [KIEWIT.com/scholarships](https://www.kiewit.com/scholarships)
2. Respond to the following two essay prompts:
 1. In no more than 500 words, explain how you plan to use your education to further your family's legacy in the engineering and construction industry
 2. In no more than 250 words, demonstrate your financial need for this scholarship
3. New applicants must have a high school official or college academic advisor complete the *Kiewit Legacy Diversity Scholarship Information Form*

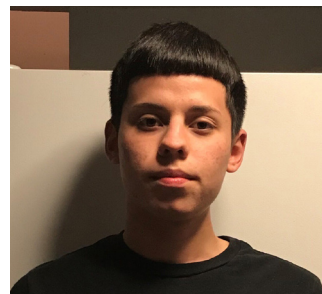
SELECTION, AWARD AND RENEWAL

Students who meet the requirements comprise the applicant pool. Selection is competitive. The Scholarship committee will select the winning students.

Recipients will receive \$5,000 per semester per year and may receive funds for up to four years. Recipients must be enrolled in 12 credit hours or more in an accredited community college, independent college, technical school or state university.

Past recipients must have a college academic advisor verify the below information in writing:

1. Be enrolled full-time in construction management or engineering program.
2. Maintain a 2.0 cumulative GPA



Visit [KIEWIT.COM/scholarships](https://www.kiewit.com/scholarships) for application, forms and further details.