

**North Section Rehabilitation
GEORGE WASHINGTON
MEMORIAL PARKWAY**

**Diverse Subcontractor/
Supplier
Outreach Event**

June 3, 2021, 1:00pm EDT

Kiewit **AECOM**

Thank you for joining us!

The presentation will begin shortly.

Please “sign in” by typing your name and company in the Q&A panel at the right side of the screen.

North Section Rehabilitation GEORGE WASHINGTON MEMORIAL PARKWAY

Diverse Subcontractor/ Supplier Outreach Event

June 3, 2021, 1:00pm EDT

Kiewit **AECOM**



This presentation is being recorded.

Microsoft Teams LIVE – Quick Tips

- All attendees are MUTED and are invited to participate through Q&A throughout the event.
- To ask a question, select Q&A on the right side of screen, type your question, and click send.
- If you experience technical difficulties, please exit event and reenter.
- Presentation slides may experience a slight delay.
- Don't forget to sign in!



A recording of this presentation will be available following the event.

Agenda

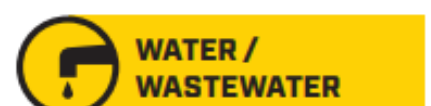
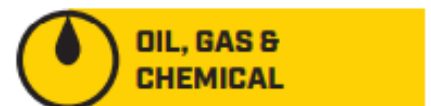
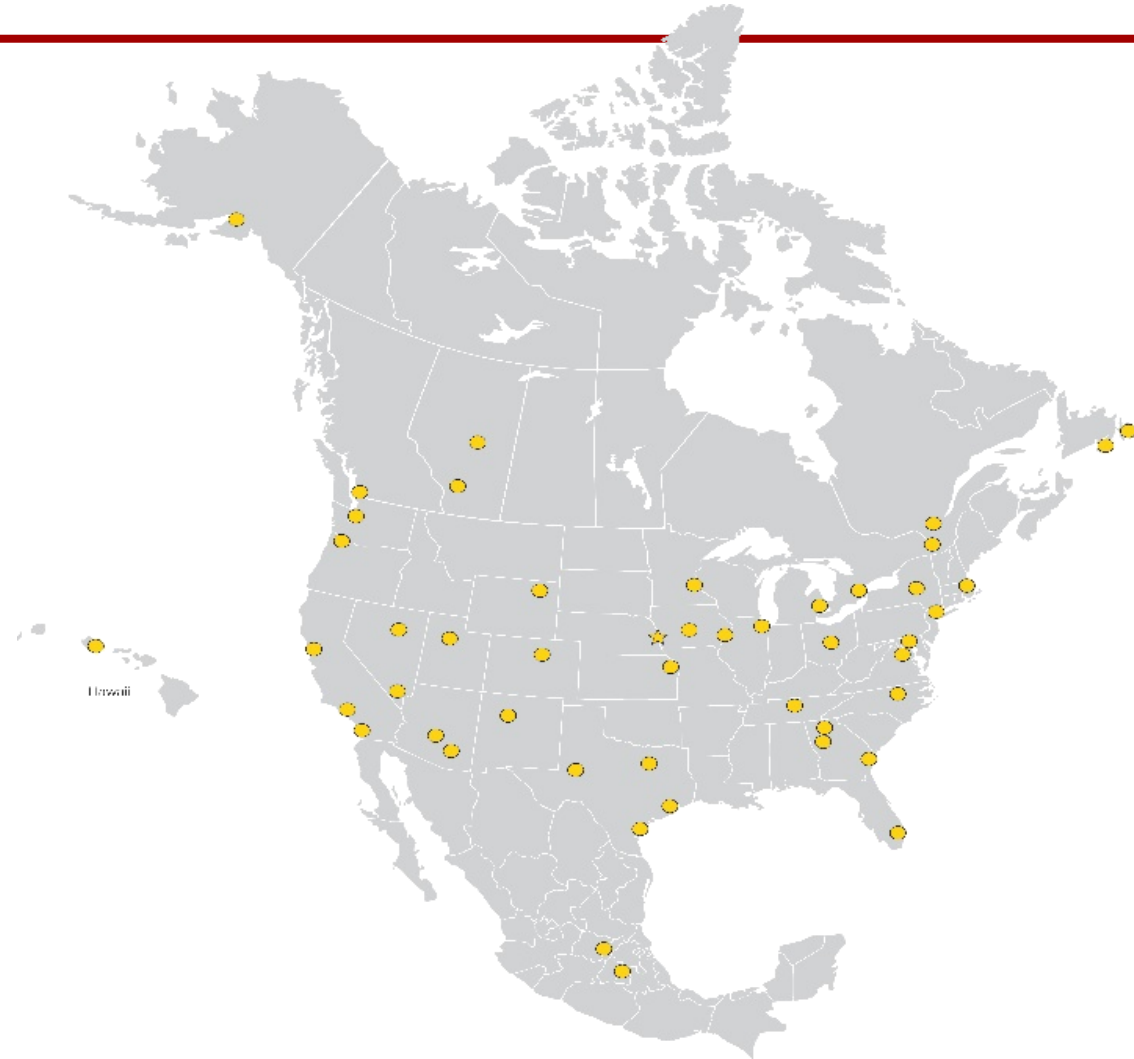
- Welcome Remarks
- Kiewit Company Overview
- Project Overview
- Anticipated Subcontract Opportunities
- Working with Kiewit
- Diversity Commitment
- Staying Connected
- Q&A

Company Overview

- Founded in 1884, one of the nation's largest contractors
- Consistently among the top 10 of Engineering News Record's Top 400 Contractors
- FORTUNE 500 company (revenues over \$10B)
- Nearly 30 years of design-build leadership
- Offers services in a variety of markets



Kiewit Office Locations and Markets



Kiewit Infrastructure Co.

What we do:

- Highways & Streets
- Rail & Transit
- Bridges
- Airport Infrastructure
- Treatment Plants
- Power Plants
- Sitework
- Tunnels



GWMP North Section Facts

- Major Commuter Route between Northern Virginia and Washington, DC
- A four-lane divided scenic parkway
- Over 70,000 vehicles per day travel this section of roadway
- Parkway provides access to several NPS recreational and historic sites
- Listed in the National Register of Historic Places (NRHP) in 1995 for:
 - The commemoration of George Washington
 - Engineering design
 - Landscape architecture

Project Overview

The proposed Design-Build project is for:

- Reconstruction of approximately 7.5 miles of a 4-lane divided highway
- Project is located on the northern section of the GW Parkway (GWMP) between Spout Run and the I-495/Capital Beltway
- Reconfiguration of the existing roadway geometry at the Route 123 interchange to improve safety
- Rehabilitation of the CIA interchange
- Rehabilitation of the drainage system and historic guard walls



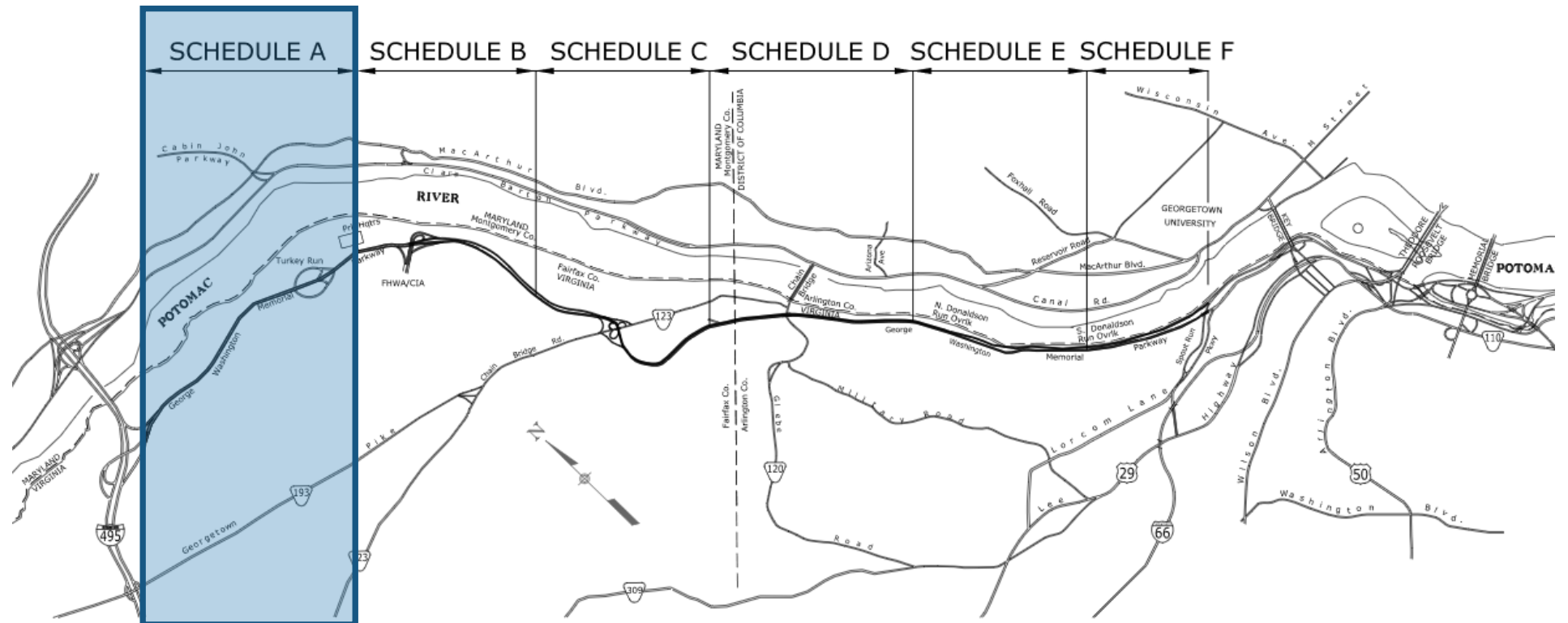
Project Overview: Major Scopes

- Drainage
 - Outfall Rehab: 128 EA
 - New 18" - 24" Pipe: 18,700 LF
 - Replace 18" - 24" Pipe: 18,000 LF
 - Pipe Lining 18" - 48" : 6,500 LF
- Civil / Roadway
 - Asphalt: 150,000 Tons
 - Base: 200,000 Tons
 - Earthwork: 125,000 CY
- Masonry / Painting
 - Replace Masonry Guard Wall: 25,000 LF
 - New Masonry Guard Wall: 2,200 LF
 - Bridge Painting: 9 Bridges
- Structures
 - Concrete Spall Repairs: 9 Bridges
 - Expansion Joints: 4 Bridges
 - Bearing Replacement: 7 Bridges
 - PPC Overlay: 1 Bridge
- MOT
- Landscaping

Overview: Base Contract

Schedule A: The base contract for the design and reconstruction of approximately 1.8 miles of the northbound and southbound GWMP from I-495 to the NPS Headquarters entrance. The work also includes the rehabilitation of Dead Run Bridge and Turkey Run Bridge.

In addition to the base contract, additional work may be added in the form of contract options 1-5

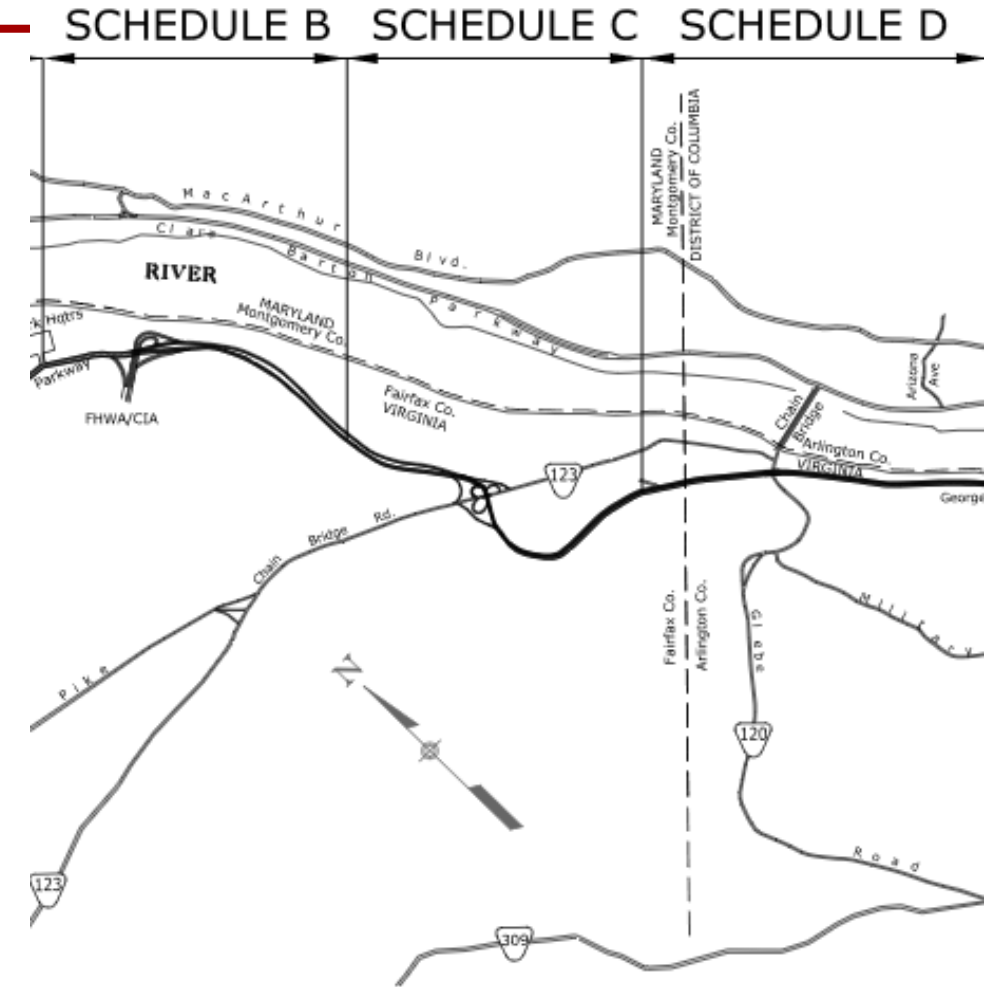


Additional Contract Options

Option 1 (Schedule B): The reconstruction of approximately 1.2 miles of the northbound and southbound GWMP from the NPS Headquarters entrance to north of Route 123 Interchange (not including the interchange). The work also includes of the rehabilitation of the CIA Interchange.

Option 2 (Schedule C): The reconstruction of approximately 1.4 miles of the northbound and southbound GWMP from north of the Route 123 Interchange to the north end of Pimmit Run Bridge, including the reconfiguration of the Route 123 Interchange. The work also includes the substructure rehabilitation of the Route 123 Overpass.

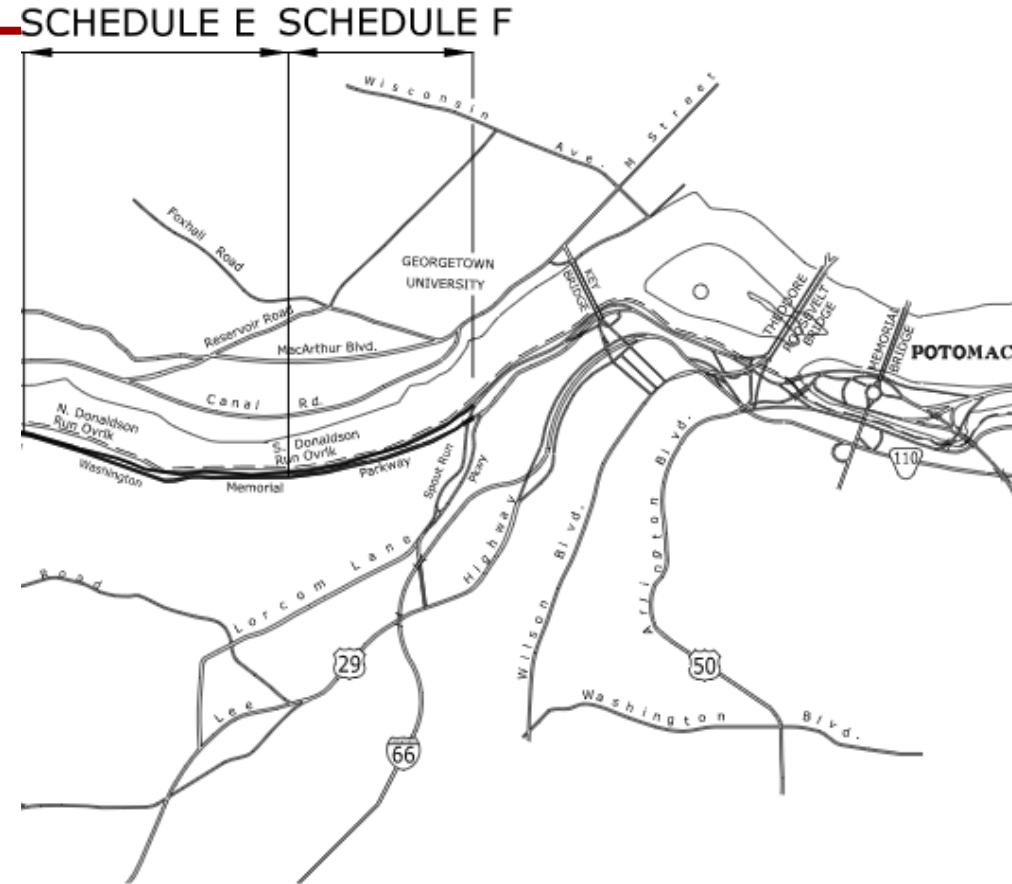
Option 3 (Schedule D): The reconstruction of approximately 1.3 miles of the northbound and southbound GWMP from the north end of Pimmit Run Bridge to the south end of Donaldson Run Bridge. The work also includes the rehabilitation of Pimmit Run Bridge, Glebe Road Bridge, Gulf Branch Bridge, and Donaldson Run Bridge.



Additional Contract Options

Option 4 (Schedule E): The reconstruction of approximately 1.1 miles of the northbound and southbound GWMP from the south end of Donaldson Run Bridge to the north end of Windy Run Bridge.

Option 5 (Schedule F): The reconstruction of approximately 0.7 miles of the northbound and southbound GWMP from the north end of Windy Run Bridge to the Spout Run Parkway. The work also includes the rehabilitation of the Windy Run Bridge, Spout Run Arch Bridge and Spout Run Bridge.



Contract Details

- **Owner:** U.S. Department of Transportation Federal Highway Administration Eastern Federal Lands Highway Division
- **Estimated Contract Value:** Over \$100 Million
- **Procurement Method:** Best Value Selection
- **Delivery Method:** Design-Build
- **Prime Contract Duration:** 4.2 Years

Project and Procurement Schedule

The following preliminary milestone dates have been identified: (This schedule is subject to change at any time by EFLHD)

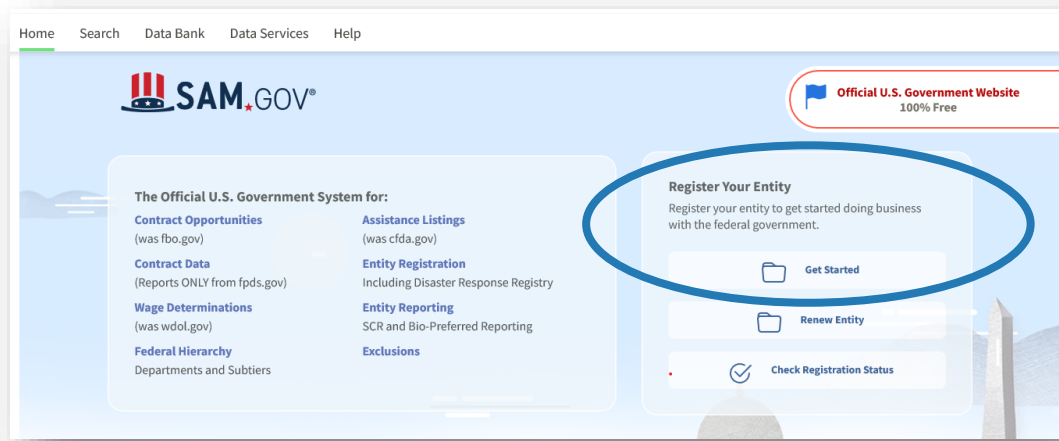
Issuing Bid Requests	6/18/2021
Vendor Quotes Due to Kiewit	7/16/2021
Prime Contract Award	8/25/2021
Prime Contract NTP	9/22/2021
Prime Final Completion	12/31/2025

Project Requirements – Registration

Register with SAM.gov

To participate in government contracting, businesses must be registered in the federal government's System for Award Management (SAM).

For information on how to register to do business with the federal government, visit: www.sam.gov.



Project Diversity/Subcontracting Goals

This Project includes the following percentage goals (of the sub-contracted value) for participation by subcontractors that are certified as:

- Small Business (SB) - 45.25%
- Veteran Owned Small Business (VOSB) – 3%
- Service-Disabled Veteran Owned Small Business (SDVOSB) – 3%
- Small Disadvantaged Business (SDB) – 5%
- Women Owned Small Business (WOSB) – 5%
- Historically Underutilized Business Zone certified (HUBZone) – 3%

For information about certification programs and eligibility, visit:

<https://www.sba.gov/federal-contracting/contracting-assistance-programs/small-disadvantaged-business> or <https://certify.sba.gov/>.

Anticipated Subcontract Opportunities*

- Aggregates
- Asphalt Paving
- Bridge Painting
- Concrete Supply
- Crack Injection
- Curbs
- Design Services
- Drainage
- Electrical Work
- Fencing
- Guardrail
- Landscaping
- Masonry Guardwalls
- Milling
- MOT
- Pipe Lining
- PPC Overlay
- Trucking

**Subcontract opportunities are contingent upon selection and award of referenced project.*



Building with Kiewit

What Does It Take to Work with Us?

We evaluate companies on different criteria based on specific project requirements. This may include, but is not limited to:

- ✓ Safety performance
- ✓ Proven quality
- ✓ Certification
- ✓ Insurance and bonding capability
- ✓ On-time performance
- ✓ Years in business
- ✓ Reputation
- ✓ Past performance with Kiewit or Client
- ✓ Value-added products or services

Equity • Inclusion • Opportunity • Growth

Next Steps

Step 1:

Visit <http://kiewit.com/GWParkwayNorth> to complete our Subcontractor Questionnaire.

The image shows two overlapping screenshots. The foreground screenshot is a 'Subcontractor Questionnaire' form with the following fields and options:

- Subcontractor Questionnaire**
- First Name *
- Last Name *
- Company Name *
- Email *
- Phone Number *
- Address *
- Website / URL *
- Type of Work: *
 - Professional services
 - Construction
 - Vendor/Supplier
- Does your company have a current DBE certification from WMATA? *
 - Yes
 - No

The background screenshot is the project overview page for the 'GEORGE WASHINGTON MEMORIAL PARKWAY' project. It features a header with the project name, a navigation menu with buttons for 'Project Overview', 'Business Inclusion Goals', 'Potential Contract Opportunities', 'Events', 'Stay Connected', and 'Resources', and a 'PROJECT OVERVIEW' section with descriptive text.

Next Steps

Step 2: Sign-up for *Building Connected* to be added to our bidder's list!

- Create an account with BuildingConnected
<https://app.buildingconnected.com/create-account>
- Follow this link to see ALL public Kiewit projects:
<https://app.buildingconnected.com/public/545c695dc26ca11600879dd8>

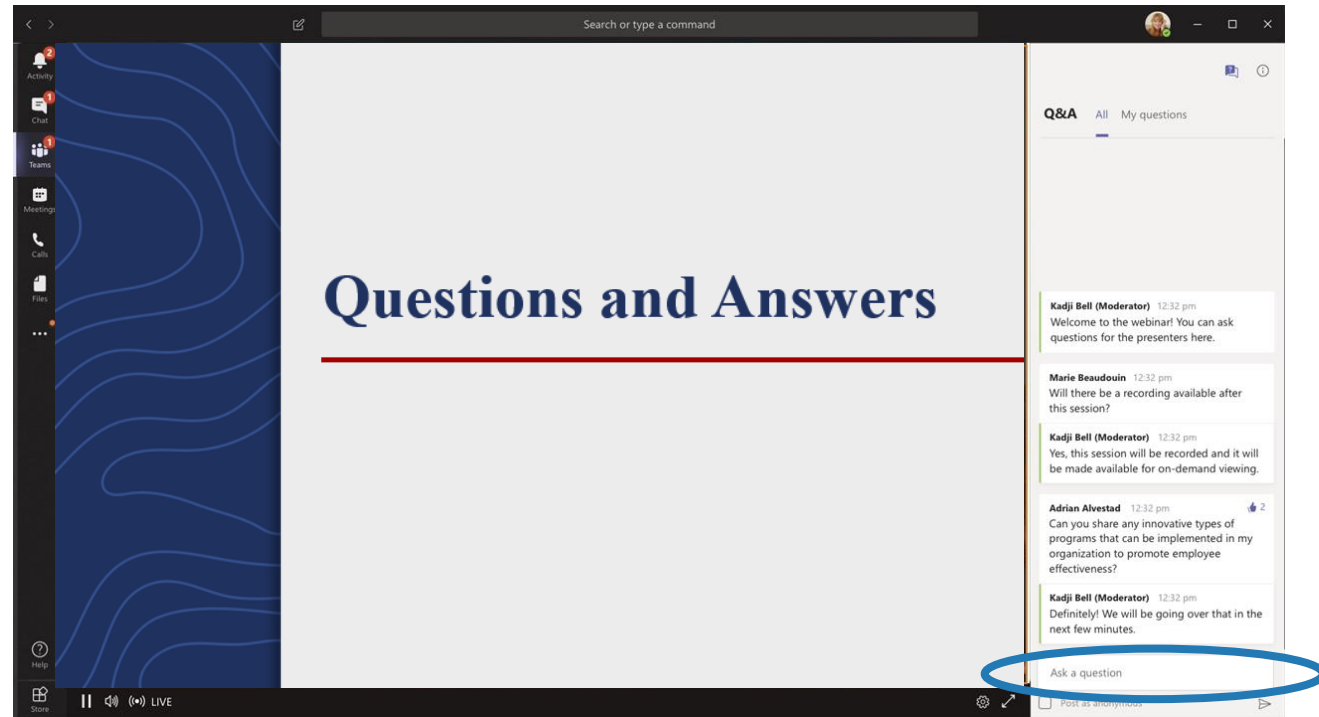


You will receive an invitation to bid via Building Connected for any bid package your company has been added to.

Questions?

Please type your questions in the Q&A panel on the right.

One of our moderators will direct to the appropriate presenter.



We Build More than Roads

Kiewit will maximize opportunities for small and diverse firms through:

- Dividing work into economically feasible packages to assist diverse-owned businesses and ensure equitable and meaningful participation
- Actively seeking out diverse businesses that will bring additional value to the project
- Building upon new and existing subcontractor relationships to foster long-term partnerships
- Fostering the development and growth of existing and potential diverse business partners
- Partnering with community and industry organizations focused on supporting small and diverse businesses

Equity • Inclusion • Opportunity • Growth

Resources and Assistance

Kiewit is committed to providing information and resources to assist firms seeking opportunities to participate on the GWMP project.



ortunities/george-washington-memorial-parkway/#opp

GEORGE WASHINGTON MEMORIAL PARKWAY

GEORGE WASHINGTON MEMORIAL PARKWAY – NORTH SECTION REHABILITATION

Kiewit Infrastructure Co. (KIC) Kiewit Infrastructure Co. (KIC) is preparing to respond to the Request for Proposals issued by the Federal Highway Administration – Eastern Federal Lands Highway Division (EFLHD), in cooperation with the National Park Service (NPS) for the delivery of the George Washington Memorial Parkway Design-Build Project.

Project Overview **Business Inclusion Goals** **Potential Contract Opportunities**

Stay Connected Resources

PROJECT OVERVIEW

The proposed Design-Build project is for the reconstruction of approximately 7.5 miles of the northern section of the George Washington Memorial Parkway (GWMP) between Spout Run and the I-495/Capital Beltway, the reconfiguration of the existing roadway geometry at the Route 123 interchange to improve safety, and the rehabilitation of the Central Intelligence Agency (CIA) interchange in Fairfax and Arlington counties, Virginia. The GWMP from Spout Run to I-495 is a four-lane divided scenic parkway that also serves as a major commuter route between northern Virginia and Washington, D.C., carrying over 70,000 vehicles per day.

GEORGE WASHINGTON MEMORIAL PARKWAY PROJECT NORTH SECTION REHABILITATION

Photo Credit: Steven L. Markus

BIDDER'S QUICK REFERENCE GUIDE - NEXT STEPS AND RESOURCES

JOIN OUR BIDDERS LIST!

1 Interested firms should visit: <http://www.kiewit.com/GWParkwayNorth> to complete our [Subcontractor Questionnaire](#)

2 Create an account with BuildingConnected at: <https://app.buildingconnected.com/create-account>

3 Once your company information has been received through our Subcontractor Questionnaire, you will receive an invitation to bid via BuildingConnected for available packages your company has expressed an interest in bidding.

Follow this link to see ALL public Kiewit projects: <https://app.buildingconnected.com/>

Stay Informed
Kiewit is committed to providing information about potential opportunities.

Goal & Commitment
This Project includes the following goals that are registered as Service Disabled Veteran Owned Small Business (WOSB), or Historically Underutilized Business Zones (HUBZone).

- Veteran Owned Small Business
- Service Disabled Veteran Owned Small Business
- Small Disadvantaged Business
- Women Owned Small Business
- Historically Underutilized Business Zones

For more information visit [www.kiewit.com](#) or contact your Federal Government, State, or Local Business Development Center.

Visit: www.kiewit.com

We're building more than a road, we're building opportunities. Kiewit believes in partnering and investing in the local, small, and diverse businesses in the communities where we work and live.

ORGANIZATIONS / RESOURCES FOR SMALL, LOCAL AND DISADVANTAGED BUSINESS ENTERPRISES

<p>FEDERAL</p> <ul style="list-style-type: none"> ▶ American Veteran Owned Business Association (AVOBA) ▶ National Veteran Business Development Council ▶ National Veteran Small Business Coalition (NVNSBC) ▶ Society of American Military Engineers (SAME) ▶ Syracuse University Institute for Veteran and Military Families ▶ U.S. Department of Commerce, Minority Business Development Agency 	<ul style="list-style-type: none"> ▶ U.S. Department of Transportation ▶ U.S. Department of Homeland Security ▶ U.S. Department of Veterans Affairs - VetBiz Portal ▶ U.S. Small Business Administration (SBA) ▶ Veterans Business Development Programs (VRBP) ▶ Veterans and Military Business Owners Association (VAMBOA)
<p>DC</p> <ul style="list-style-type: none"> ▶ DC Chamber of Commerce ▶ DC Office of Small and Local Business Development ▶ DC Water ▶ District Department of Transportation ▶ Greater Washington Hispanic Chamber of Commerce (GWHCC) ▶ Insurance Resources for DC Businesses 	<p>DISTRICT OF COLUMBIA</p> <ul style="list-style-type: none"> ▶ SCORE DC ▶ South Atlantic Small Business Transportation Resource Center (SABTRC) ▶ Washington Area Community Investment Fund (WACIF) ▶ Washington, DC Small Business Development Center
<p>MD</p> <ul style="list-style-type: none"> ▶ Governor's Office of Minority Affairs (GOMA) ▶ Maryland Department of Transportation ▶ Maryland Small Business Development Center (SBDC) ▶ Meridian Management Group, Inc. (MMG) ▶ Montgomery County Economic Development Corporation 	<p>MARYLAND</p> <ul style="list-style-type: none"> ▶ Prince George's County Economic Development Corporation (EDCC) ▶ Prince George's County Minority Business Development Division ▶ Prince George's Financial Services Corporation ▶ Maryland Procurement Technical Assistance Center
<p>VA</p> <ul style="list-style-type: none"> ▶ Arlington Economic Development ▶ Community Business Partnership ▶ Fairfax County Economic Development Authority ▶ Old Dominion University Veterans Business Outreach Center (ODU/VBOC) 	<p>VIRGINIA</p> <ul style="list-style-type: none"> ▶ SCORE Central Virginia ▶ Virginia Business One Stop ▶ Virginia Department of Small Business & Supplier University ▶ Virginia Procurement Technical Assistance Center ▶ Virginia Small Business Development Center Network

BUILDING OPPORTUNITIES | BUILDING RELATIONSHIPS | BUILDING PARTNERSHIPS

Kiewit Infrastructure Co. is committed to meeting or exceeding stated project participation requirements. We will maximize opportunities for local small and diverse firms through dividing work into economically feasible packages to ensure equitable and meaningful participation. Actively seeking out diverse businesses that will bring additional value to the project; Building upon new and existing subcontractor relationships to foster long-term partnerships; Fostering the development and growth of existing and potential diverse business partners and partnering with community and industry organizations focused on supporting small and diverse businesses.

Kiewit is an Equal Opportunity Employer.

Other Opportunities: Arlington National Cemetery Defense Access Roads

Owner: FHWA

Location: Arlington, VA

Scope: Realignment of Columbia Pike from Washington Blvd to S. Oak St; reconfiguration of interchange with Washington Blvd and Columbia Pike; removal of Southgate Rd, construction of S. Nash Street and shortening S. Joyce Street; relocation of utilities from existing locations to new road alignments and consolidated utility corridors; retaining walls in various locations; tunnel under Columbia Pike; mass grading; and other miscellaneous work.

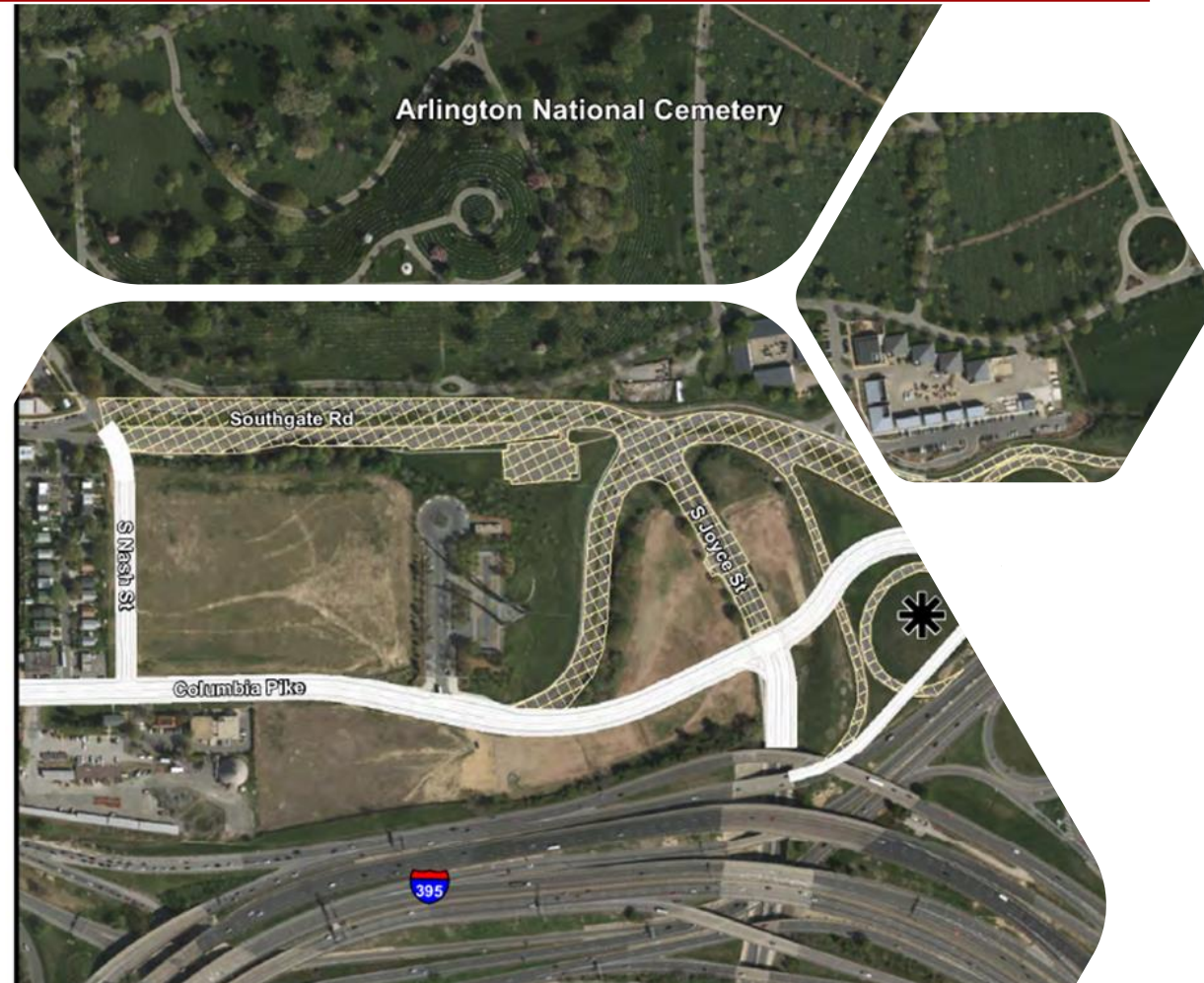
Advertise/Due Date: May 2021/June 2021

Project Schedule: August 2021/July 2025

Project Budget: \$60M+

SB Participation Goal: 45.25%

Contact: Garret.Fosmer@kiewit.com





Questions and Answers

Get Connected. Stay Connected.

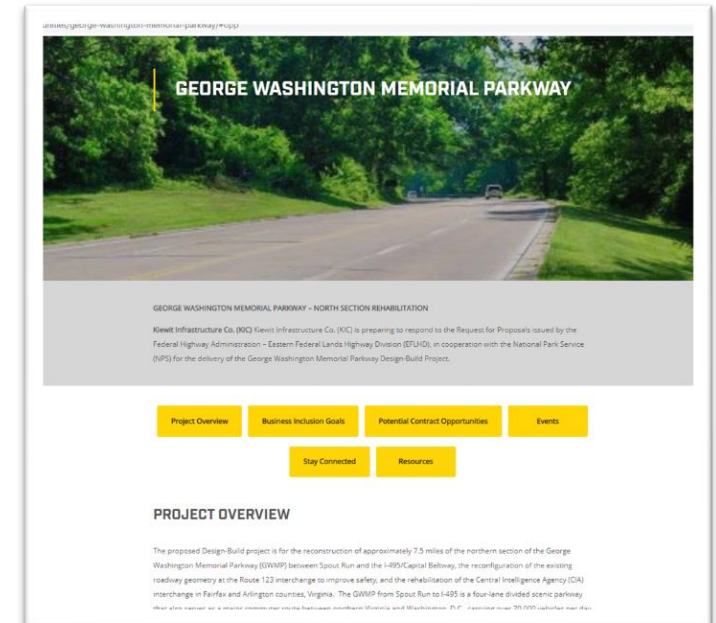
Email:

brett.newmark@kiewit.com



Visit:

www.Kiewit.com/GWParkwayNorth



Thank you for joining us!