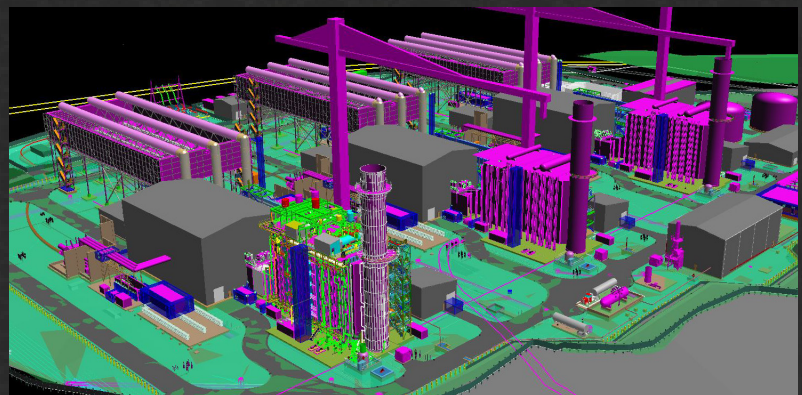




**Kiewit**



# UNIVERSITY RELATIONS

\* Please note, all programming is facilitated in English



## TABLE OF CONTENTS

### WHY KIEWIT

Why Partner with Kiewit?	3
--------------------------	---

### PROGRAM DEVELOPMENT

Partnership Request	4
---------------------	---

InEight - Construction Project Management Software	5
--	---

OSHA 10 - Hour Certification	6
------------------------------	---

### FACULTY DEVELOPMENT

Building a Stronger Curriculum with Kiewit	7
--	---

Kiewit Faculty Scholars	8
-------------------------	---

Professors' Portal	9
--------------------	---

### STUDENT PROGRAMMING

Virtual Tours	10
---------------	----

Women in Construction and Engineering Leadership Seminar	11
--	----

Other Opportunities	12
---------------------	----

Thank You	13
-----------	----



# WHY PARTNER WITH KIEWIT?

## Why Do Universities Partner with Kiewit?

Kiewit partners with over 300 universities, in both the United States and Canada. We hope each program, faculty, and student finds each interaction with us a positive and enriching one.

Ben Farrow, of Auburn University, has found great value in his partnership with Kiewit.



“We seek industry partners who are passionate about construction education. Whether Kiewit is running a student competition, inviting the next generation of leaders to a training event, engaging a class in discussion on heavy civil topics, providing internships for students, or revealing new plans for positively impacting students and faculty, our students and program always benefit from such engagement. Construction education in 2018 requires a strong partnership, and in some sense, that partnership involves the student, the university program, and industry. We are fortunate to have a partner in Kiewit.”

Ben enthusiastically recommends Kiewit to other faculty because he has experienced the resources Kiewit devotes to the engagement with its partners. Ben states, “They provide a “win/win” environment that will benefit everyone involved and will increase the opportunities for faculty and students.”

“Kiewit has become involved on a large scale as they attempt to impact construction education throughout all universities in multiple areas of study.”

### **Ben Farrow**

Professor, Auburn University

Schools with faculty participation in the University Relations programming see a **16% increase** in Kiewit hires each year

### **By the numbers:**

- Kiewit completed 360 partnerships in 2018-2019
- Kiewit has shared over 250 learning modules with 436 faculty partners
- Kiewit hosted 15 Faculty Scholars
- 1315 students registered for OSHA trainings since Fall 2018

**These are the reasons Ben and Auburn partner with Kiewit. Why do you?**

**Tell us why you partner with Kiewit by sending us an email at: [University.Relations@Kiewit.com](mailto:University.Relations@Kiewit.com)**

# PARTNERSHIP REQUESTS

How can Kiewit help you? With experts in construction and engineering in seven markets, we want to be a partner in facilitating what goes on in the classroom. Interested in a job tour for your class? Looking for curriculum lecture support from an industry representative? Interested in getting students OSHA 10-hour certified?

Partnership requests are how we manage your educational needs. We focus on four key areas of partnership:

- Program Development
- Faculty Development
- Student Development
- Sponsorship/Donation

Requests are submitted [via this link](#).

## Partnership Process

1

Kiewit coordinates and plans with you to complete requests

2

Submit all requests through the [Partnership Request form](#) at least one month prior to event date.

3

Implement approved requests

4

Evaluate impact on student learning

## LARGE DONATION REQUESTS

If you'd like to request Kiewit sponsorship donations in excess of \$10,000, please submit [here](#). **Requests are due by May 1** and decisions are communicated during the following semester .

## **IT'S NOT JUST CONSTRUCTION EDUCATION IT'S CONSTRUCTION EXPERIENCE**

The future of the construction industry rests on the shoulders of today's college students and those who guide them along their educational path. InEight InSchool is a program aimed at empowering the next generation of designers, builders and engineers by equipping them with the skills to use the latest technologies. This positions them to become productive contributors when entering the workforce.

More importantly, InEight InSchool directly connects students and faculty to team members and customers of InEight – the people who develop and use the software – to deliver immediate, personal instruction and instill confidence that's a level above textbook learning.

Through InEight InSchool, students are provided with the relevant tools of the trade to assist them in completing their coursework, plus support from experts in class and on jobsites so they can gain real-life, hands-on experience.

### **HERE'S WHAT INEIGHT INSCHOOL OFFERS YOU:**

- Free access to cloud-based InEight software
- Classroom instruction led by InEight team members, tailored to your specific needs
- Guest lecture opportunities on industry subjects
- Jobsite tours of projects in your area in partnership with Kiewit College Relations
- Online training and certification
- Internships
- Sponsorship opportunities

**Free access is offered to InEight cloud-based software in the following categories:**  
Estimating, Project Controls, Work Progressing and Quantity Tracking and Scheduling.

The industry's most experienced experts  
combined with today's most progressive tools  
add up to tomorrow's best industry talent.

Find out how by reaching out to [University.Relations@kiewit.com](mailto:University.Relations@kiewit.com)

# OSHA 10-HOUR CERTIFICATION

Kiewit partners with university leaders to provide engineering and construction students with free OSHA 10-hour safety certification through RedVector. The online course provides students with the tools, knowledge, and confidence to work safe, and opens doors for students who may not have thought of construction as a career path. Kiewit is making safety training available to tomorrow's leaders so they will have gold standard safety training no matter where they end up. If you would like to provide OSHA 10-hour Safety Certification to your students, please send an excel document with first name, last name and email address of the students to [University.Relations@kiewit.com](mailto:University.Relations@kiewit.com). Please include the start date and end date for the course and the mailing address where the OSHA cards can be sent.

“I found it very beneficial to learn the safety side of things since we don't cover this in typical classes in school.”

**Previous OSHA Participant**



# BUILDING A STRONGER CURRICULUM WITH KIEWIT

Building a Stronger Curriculum with Kiewit (BSCK) is our annual faculty workshop that offers participating academic leaders the opportunity for professional development through engagement with Kiewit operations leaders to build curriculum relevant for today's workforce.

Participants compare, discuss, and brainstorm new and exciting ways to enrich their classroom materials through utilizing the Kiewit diverse market and job function content.

## Highlights:

- 36 faculty from construction and engineering programs attended
- During the 2019 two-day event, faculty learned more about: estimating, project-delivery models and risk, retention in the industry and the future of construction and engineering
- Faculty experienced hands-on learning and gained access to Kiewit resources

If you did not have the chance to attend this event or the previous workshops, you can still learn from them. All of the learning modules have been uploaded to the Professors' Portal and are available for download.

“Every minute spent was well worth my time and I would gladly do it again. I really enjoyed the mix of topics. It allowed me to pull ideas from different sources for the many courses taught in our department.”

## Previous Attendee



# KIEWIT FACULTY SCHOLARS

The purpose of Kiewit's Faculty Scholars program is to provide faculty with opportunities to gain industry experiences through working at Kiewit.

These unique opportunities provide hands-on, real-world work experience and lead to the enriched learning in the construction and engineering classrooms. Each educator will spend their scholar period (typically 10-12 summer weeks) on a construction site, or within a Kiewit office, working in a design or operations support function.

Work assignments are based on the alignment of the Faculty Scholar's goals and district needs. With support from their institution, faculty identify skills, knowledge, and abilities they wish to gain. These goals are based on needed professional work experience.

The experience is very rewarding. I have learned a lot and I believe Kiewit has invested in an indirect way in the future construction graduates. I think every faculty can benefit from similar opportunities.

## Kiewit Faculty Scholar



Paul Ackerman (2017), Kimberly Bivins (2015), and Mohamed Diab (2016)



Aaron Costin, Tommy Tafazzoli (2018), Eric Showalter (2018).

## BECOME A KIEWIT FACULTY SCHOLAR

If you're interested in becoming a faculty scholar you can submit an interest form on our website.



# PROFESSORS' PORTAL

Are you looking for additional course content? The Professors' Portal is where you can find peer and Kiewit developed learning modules aligned with ACCE and ABET outcome based standards. You can also access Kiewit jobsite photos, past conference content, and more. With over 250 resources in a variety of subjects it is an asset for curriculum development.

- If you lose your password, send your name, university, and email address to: [University.Relations@Kiewit.com](mailto:University.Relations@Kiewit.com)

If you would like access to the Professors' Portal, please send your name, university, and email address to: [University.Relations@Kiewit.com](mailto:University.Relations@Kiewit.com)

## What will you find?

All learning modules on the Portal have been created by Kiewit professionals, Faculty Scholars, and Operations leaders. This provides a wide range of insight, and experience at your fingertips.

## Professors' Portal

Examples of Learning Module Offerings

Communication  
ACCE 1, 2  
ABET g

Technology  
ACCE 10,  
ABET j, k

Safety  
ACCE3,  
ABET c, i, j

Methods,  
Materials, &  
Equipment  
ACCE 8,  
ABET a, h

Accounting &  
Cost Control  
ACCE 14,  
ABET h



- Verbal Communication
- Delegation

- Energy Modeling in BIM

- Creating Safety Plans
- Accountability

- Soils and Foundations
- Psychrometrics

- Cost Codes
- Time- Cost Trade Off

# VIRTUAL TOURS

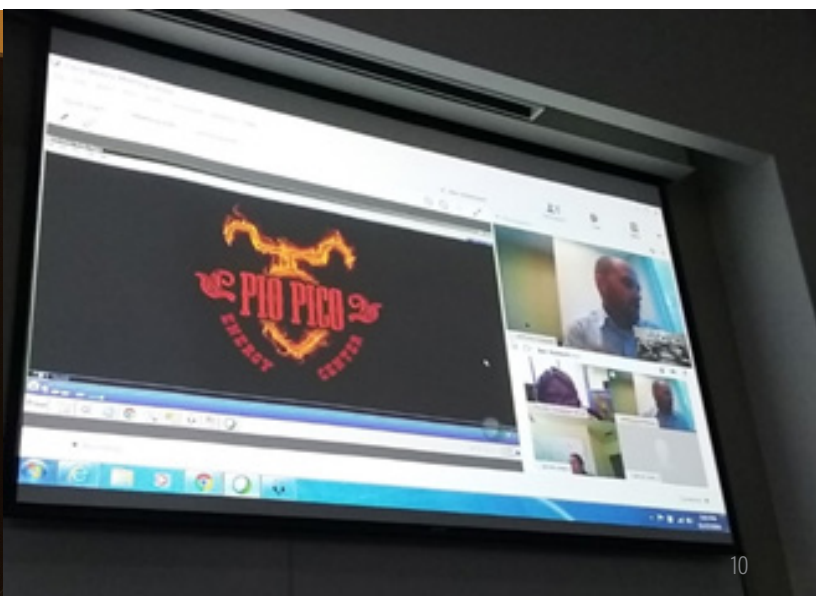
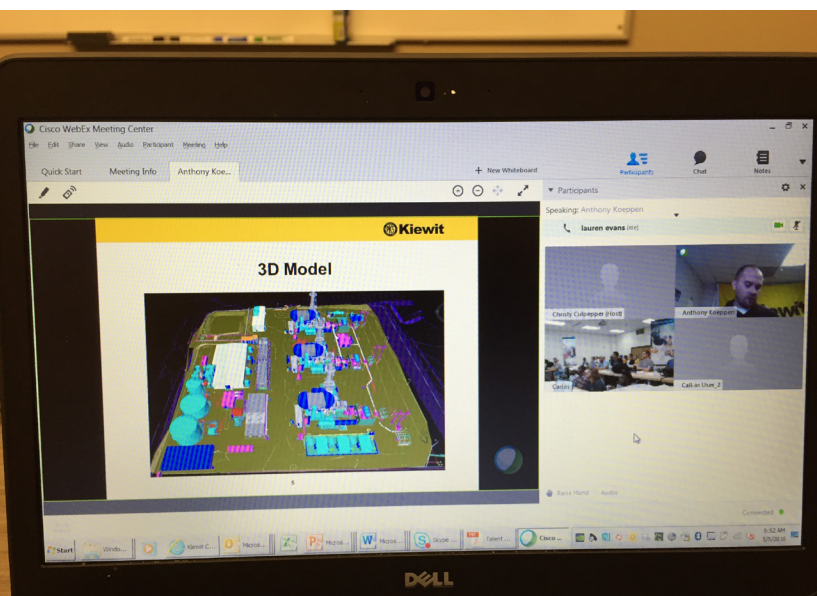
Do you have easy access to tour a power project, a major infrastructure project, or other worksites relevant to your curriculum? If not, we can help! Kiewit provides virtual tours to give your students an up-close look at a variety of work to better understand where they can apply their skills.

Kiewit conducts virtual project tours for classes of all sizes. This experience allows students to view market diverse projects through high definition site videos and live virtual discussions. A member of the project team will provide insight into the scope of each project before wrapping up with a “day in the life” perspective from a variety of job functions relevant for your students.

If you would like to have a Virtual Tour in your classroom, submit your request through this [form](#) at least. For any additional questions contact us at [University.Relations@Kiewit.com](mailto:University.Relations@Kiewit.com).

“Anthony did a great job explaining what was going on in the plant, and how parts of the plant worked. As someone who has never taken a tour of a power plant, I began to understand how things worked.”

**- Pio Pico Virtual Tour Attendee**



# WOMEN IN CONSTRUCTION AND ENGINEERING LEADERSHIP SEMINAR

The Women in Construction and Engineering Leadership Seminar (WCELS)\* is a two-day event focused on developing the leadership skills of collegiate women. Women also participate in a book review to further their leadership skills.

Qualified candidates are current college students who have strong leadership potential, a drive for success, with a passion for the construction and engineering fields. Content is designed for undergraduate students specifically.

To get more information about this event, please click here or visit our website: [Kiewit.com/careers/UniversityRelations](https://www.kiewit.com/careers/UniversityRelations)

*\* Previously known as Women in Construction Leadership Seminar (WCLS)*

“The most memorable part of WCELS is how inspired I felt to continue working hard. And for being recognized for my efforts thus far. It was great to be in a room surrounded by so many talented and bright young women with the same interests as me.”

“The biggest lessons I took away from WCELS were to never give up, to embrace my femininity and not to ever feel like I’m not good enough to try something. I’m my biggest enemy, not anybody else.”

## Previous WCELS Attendees



# Other Opportunities

## Live Tours

Know of a Kiewit project in your neighborhood or traveling to a part of the country where we can show our work? We are excited to show students the real world application of classroom learning on projects of various scopes and sizes. If you're interested in learning more, reach out to: [University.Relations@Kiewit.com](mailto:University.Relations@Kiewit.com).

## Student Competitions

Kiewit believes in investing in the future leaders of our industry through Student Competitions. Do you have a student competition or team that need sponsorship? Submit a request through [this link](#) for support for your competition.

## Guest Lectures

Did you know Kiewit industry experts are willing to come to your class to discuss topics such as Contract Risk, Estimating, Geotech, Industry Lessons Learned, Finance, and Soft Skills. If you are interested in having someone come to your classroom, submit a request through [this link](#) outlining the details.

## Advisory Boards

By providing our knowledge and experience, Kiewit is invested in preparing future leaders for our industry. Have an advisory board that could benefit from our participation? Submit a request through [this link](#) outlining the details.

# THANK YOU

## University Relation Vision and Mission Statements

**Vision:** Lead a seamless university recruiting and relations strategy, with effective operations engagement, providing data and customer driven solutions to become the employer of choice.

**Mission:** By building and deepening strategic relationships with key academic leaders, University Relations attracts quality talent, enhances construction and engineering education, and equips future industry leaders for impactful careers.

## Constantly Working to Improve

We evaluate our programming and partnerships each year to ensure we are doing our best to align with our vision and mission statements to be the best we can be.

If you have any suggestions for improvement, let us know by emailing [University.Relations@Kiewit.com](mailto:University.Relations@Kiewit.com).

Thank you to all of our faculty partners for your support and continued partnership! You are an invaluable part of University Relations, and we are so excited to see where next year takes us.